

B O R D E A U X

52 Bottle Single Zone Wine Cooler
Built-in & Free Standing



Operation and Storage Manual

Model: BEWC-52

Contents

<u>1</u>	Features.....	1
<u>2</u>	Before First Use.....	1
<u>3</u>	Important Safety Measures and Instructions.....	2
<u>4</u>	Warnings and Cautions.....	3
<u>5</u>	Installation.....	6
<u>6</u>	Device Overview.....	7
<u>7</u>	Before Initial Operation.....	8
<u>8</u>	Temperature Setting.....	8
<u>9</u>	Operation.....	8
<u>10</u>	Helpful Hints/Energy Saving.....	9
<u>11</u>	Cleaning & Maintenance.....	9
<u>12</u>	How to Move the Appliance.....	10
<u>13</u>	How to Move the Shelves.....	11
<u>14</u>	Cabinet Dimensions.....	11
<u>15</u>	Trouble Shooting.....	12
<u>16</u>	Decommission.....	13
<u>17</u>	Electrical Circuit Diagram.....	13
<u>18</u>	Specifications.....	14

BORDEAUX

52 Bottle Single Zone Wine Cooler

Thank you for choosing a Bordeaux Wine Cooler. If operated and taken care of properly in accordance with these instructions, this appliance will be useful for many years.

1 Features

- Single zone for 52 bottles
- Temperature range: 5 – 18°C
- Built-in & free-standing installation
- Blue LED interior light with switch
- Tempered glass door
- Stainless steel door frame and handle
- No frost with interior fan circulating
- Energy efficient design
- 100% HFC free and CFC free
- Security lock system
- Beech wood shelves

2 Before First Use

- Before first use, remove any stickers or similar from the appliance except for the rating label.
- Dispose of any plastic bags as they pose a risk of suffocation to young children.

Please read this manual before operating the appliance and keep it in a safe place for future reference. If this appliance is transferred to a new owner, the manual should also be provided to the new owner. If you ignore the safety instructions, you will endanger your health and life.

3 Important Safety Measures and Instructions

- Before operating the appliance, check if the voltage indicated on the appliance's technical plate corresponds to the voltage of the electricity supplied to your home.
- Check the technical periphery of the appliance. Do all wires and connections to the appliance work properly? Or are they time-worn and do not match the technical requirements of the appliance? A check-up of existing and newly made connections must be done by an authorized professional. All connections and energy-leading components (incl. wires inside a wall) must be checked by a qualified professional. All modifications to the electrical mains to enable the installation of the appliance must be performed by a qualified professional.
- This appliance is intended for private use only.
- This appliance is intended for cooling wine in a private household only.
- This appliance is for indoor use only.
- This appliance is not intended to be operated for commercial purposes, during camping or* in public transport.
- Operate the appliance in accordance with its intended use only.
- Do not allow anybody who is not familiar with this instruction manual to operate the appliance.
- This appliance may be operated by children aged from 8 years and above as well as by persons with reduced physical, sensory and mental capabilities or lack of experience and knowledge if they are supervised or have been instructed concerning the safe use of the appliance and do comprehend the hazards involved. Children must not play with the appliance. Cleaning and user maintenance must not be carried out by children unless they are supervised.

4 Warnings and Cautions

- Do not connect the appliance to the mains if the appliance itself or the power cord or the plug are visibly damaged.
- Never try to repair the appliance yourself. If the appliance does not operate properly, please contact the shop you purchased the appliance at. Original spare parts should be used only.
- When the power cord is damaged, it must be replaced by the manufacturer or an authorized after sales service or a qualified professional only.
- This appliance is equipped with the environmentally friendly refrigerant R600a. The refrigerant R600a is inflammable. The components of the cooling circuit must not be damaged during transport or use.
- If any part of the cooling circuit is damaged, the appliance must not stand near a fire, naked light or spark-generating devices. Contact the shop you purchased the appliance at immediately.
- If gas is set free in your home:
 1. Open all windows.
 2. Do not unplug the appliance and do not use the control panel or thermostat.
 3. Do not touch the appliance until all the gas has gone, otherwise sparks can be generated which will ignite the gas.
- Keep all components of the appliance away from fire and other sources of ignition when you dispose of or decommission the appliance.
- Do not install the appliance near volatile or combustible materials (e.g. gas, fuel, alcohol, paints) or in rooms which may have poor air circulation (e.g. garage).

EXPLOSION HAZARD

Do not store any explosive materials or sprays that contain flammable propellants in your appliance.

- Do not connect the appliance to the electric supply unless all packaging and transit protectors have been removed.

- Operate the appliance with 220–240V AC/50Hz only. All connections and energy-leading components must be replaced by an authorized professional.
- Do not use a socket board or a multi socket when connecting the appliance to the mains.
- A dedicated and properly grounded socket meeting the data of the plug is required to minimize any kind of hazard. The appliance must be grounded properly.
- Check that the power cord is not placed under the appliance or damaged when moving the appliance.
- The technical data of your energy supplier must meet the data on the model plate of the appliance.
- Your domestic circuit must be equipped with an automatic circuit breaker.
- Do not modify the appliance.

RISK OF ELECTRIC SHOCK

Turn off the power before you install the appliance and before you connect it to the mains. Do not use any steam cleaners to clean or defrost the appliance. The steam can get into contact with the electrical parts and cause an electrical short. Never use mechanical devices, knives or other sharp-edged items to remove encrusted ice inside the appliance.

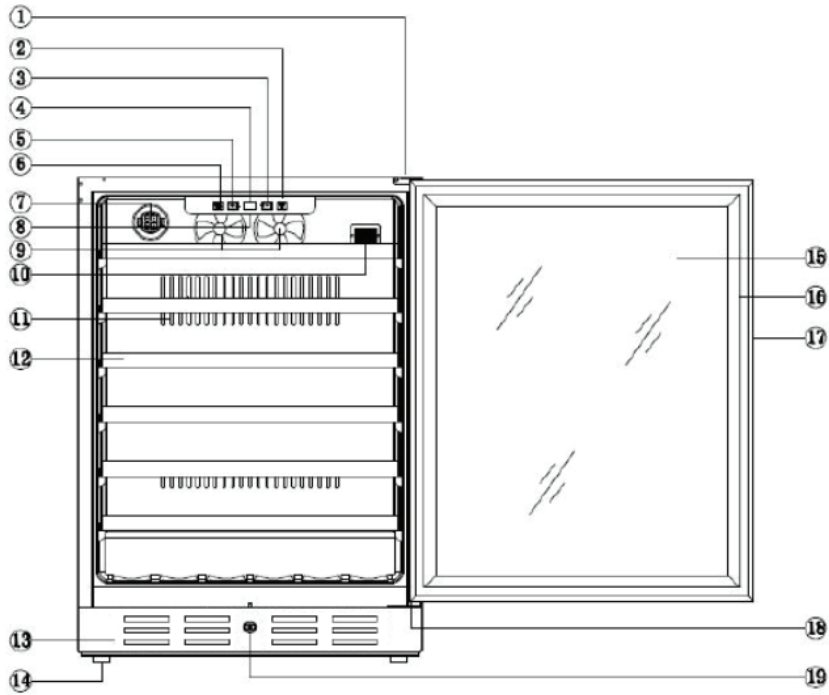
- Disconnect the appliance from the mains before you clean or maintain it.
- Do not use any electric appliances inside the food storage compartments of your appliance unless they are recommended by the manufacturer of your refrigerator.
- Do not put any heat-radiating appliances onto your appliance.
- Do not install the appliance in a place where it may come in contact with water/rain, otherwise the insulation of the electrical system will be damaged.
- Do not put a water-boiler or vases onto your appliance. The electrical components of your appliance can be seriously damaged by water over-boiling or spilled water.

- Children must never play with the appliance.
- If you decommission your appliance (even temporarily), ensure that children cannot get into the appliance.
- The condenser and the compressor, located at the rear of the appliance, can reach high temperatures during ordinary operation. Carry out the installation according to this manual. Insufficient ventilation of the appliance will impair its operation and will damage the appliance. Do not cover or block the ventilation slats at any time.
- Do not touch the extremely cooled surfaces with wet or damp hands, because your skin may stick on these surfaces.
- When you move the appliance, hold it at its base and lift it carefully. Keep the appliance in an upright position.
- Do not tilt the appliance more than 45°.
- If the appliance is transported in a horizontal position, some oil may flow from the compressor into the refrigerant circuit.
- Leave the appliance in an upright position for 4–6 hours before you switch it on to ensure that the oil has flowed back into the compressor.
- Never use the door for moving the appliance as you will damage the hinges.
- Do not operate the appliance unless all components are installed properly.
- Do not stand or lean on the base, the drawers, the doors etc of the appliance.
- Do not put hot liquids or hot foodstuff into the appliance.
- The air vents of the appliance or its built-in structure (if the appliance is suitable for being built-in) must be completely open, unblocked and free of any kind of dirt.

5 Installation

- Unpack the appliance carefully. Dispose of the packaging.
- The accessories of your appliance can be protected from damage due to transportation (adhesive tape etc.). Remove such tape very carefully. Remove remains of such tapes with a damp cloth using lukewarm water and a mild detergent (see chapter **Cleaning and Maintenance**). Never remove any components from the back of the appliance.
- Install the appliance in a suitable position with an adequate distance from sources of heat and cold.
- Check that the appliance and the power cord are not damaged.
- Install the appliance in a dry and well-ventilated place.
- Protect the appliance from direct sunlight.
- The doors must open completely and without hindrance.
- Install the appliance on a level, dry, solid floor
- Connect the appliance to the mains properly.
- The nameplate is situated inside the appliance or at the back.

6 Device Overview





- | | |
|---------------------------|-------------------|
| ① Upper Hinge | ⑪ Exhaust Window |
| ② Light Switch | ⑫ Shelf |
| ③ Temperature Setting | ⑬ Exhaust Window |
| ④ Temperature Display | ⑭ Adjustable Foot |
| ⑤ Temperature Setting | ⑮ Glass |
| ⑥ C°/F° Switch | ⑯ Door Seal |
| ⑦ Carbon Filter | ⑰ Handle |
| ⑧ Light | ⑱ Lower Hinge |
| ⑨ Fan | ⑲ Lock |
| ⑩ NTC Point (thermometer) | |

7 Before Initial Operation

- Leave the appliance in an upright position for 4–6 hours before you connect it to the mains.
- Clean the appliance thoroughly. Be very careful, especially inside the appliance (see chapter **Cleaning and Maintenance**).
- The appliance must be connected to the mains properly.
- Allow the appliance to stabilize the temperature for approx. 24 h before use.
- Do not overfill the appliance.

8 Temperature Setting



- Set the temperature using the  and  buttons by 1° within a range of 5 to 18°C (40–66°F).
- Switch on/off the internal light using the LIGHT button.
- Select degrees Celsius or degrees Fahrenheit using the °C/°F button.
- Flashing LED = Setting mode of the temperature.
- Constant LED = Cooling temperature.

9 Operation

- The appliance can only reach the relevant temperatures when:
 1. The ambient temperature meets the climatic class.
 2. The doors close properly.
 3. You do not open the doors too often or too long.
 4. The door seals are in proper condition.
 5. The appliance is properly positioned.

6. You have not overfilled the appliance.
 7. You do not store warm or hot food in the appliance.
- High ambient temperatures and simultaneously operating at the coldest setting may make the compressor operate permanently to keep the temperature constant inside the appliance.

10 Helpful Hints/Energy Saving

- Try opening the door as little as possible, especially when the weather is warm and humid. When you open the door, close it as soon as possible.
- Make sure the appliance is always well-ventilated.
- Disconnect the appliance from the mains if you do not operate it.
- Always keep the door seals clean and in a proper condition.

11 Cleaning & Maintenance

WARNING

Disconnect the appliance from the mains before you clean or maintain it.

- Always keep the appliance clean so that unpleasant odours do not occur.
- Dust deposits on the condenser will increase the energy consumption. Clean the condenser twice a year with a vacuum cleaner or a soft brush.
- Take off all rings and bracelets before cleaning or maintaining the appliance, otherwise you may damage the surface of the appliance.

Detergent

- Do not use any harsh, abrasive detergents.
- Do not use any aggressive detergents.
- Do not use any solvents.

External Cleaning

- Use a moist cloth and a mild, non-acid detergent.
- Use clear water to rinse.
- Dry the cleaned surfaces with a cloth.

Internal Cleaning

- Clean the shelves and the other removable parts with warm water and a mild, non-acid detergent.
- Use clear water to rinse.
- Dry the cleaned surfaces with a cloth.
- Clean the interior with water and a mild, non-acid detergent.
- Use clear water to rinse.
- Dry the cleaned surfaces with a cloth.
- Check the water drain and clean it if needed.

Door Seal

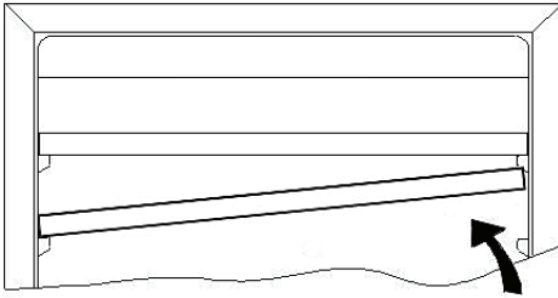
- Clean with warm water and a mild, non-acid detergent.

12 How to Move the Appliance

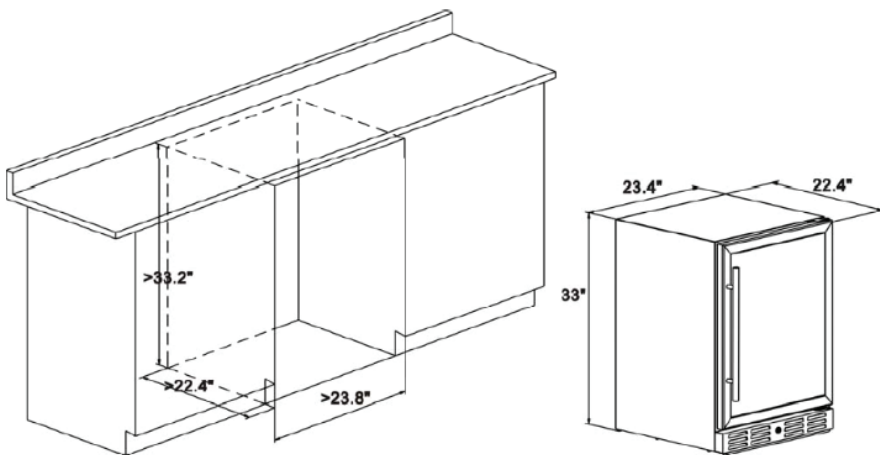
- Remove all bottles.
- Securely tape down all loose items inside the appliance.
- Turn the level feet up to the base to avoid damage.
- Tape the door.
- The appliance must be moved in an upright position.

13 How to Move the Shelves

- Open the door completely before you pull out the shelves to avoid damaging the door seal.
- For easy access to the storage content, pull the shelves approx. 1/3 out. A notch on both sides of the tracks protects bottles from falling down.
- When you want to remove/insert a shelf, hold it tilted (see below):



14 Cabinet Dimensions



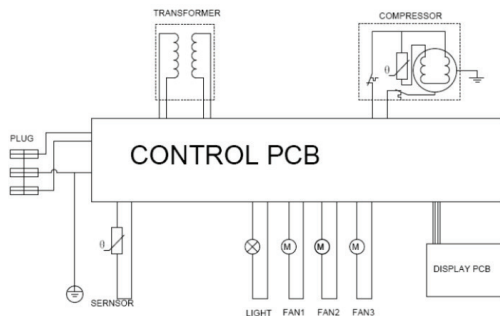
15 Trouble Shooting

POSSIBLE CAUSE	MEASURE
The plug of the appliance is not connected to the socket.	Check the corresponding socket by connecting it with another appliance.
The plug has become loose.	Check the fuse box.
<ul style="list-style-type: none">• The socket is not supplied with energy.• The fuse is switched off.• The voltage is too low.	Compare the data on the model plate with the data of your energy supplier.
The door was frequently opened.	Close the door properly.
The door is not properly closed.	Do not overfill.
<ul style="list-style-type: none">• The appliance is overfilled. The door seals are damaged.	Replace the seal.
<ul style="list-style-type: none">• Main control board is defective.• PCB is defective.• Plug is defective.	Contact the service.
<ul style="list-style-type: none">• LED is defective.• Temperature cannot be determined.	Contact the service.
The appliance is not installed on a level, dry, solid floor.	Realign the appliance. Readjust the appliance.
The appliance is in contact with a wall or another item. The bottles are incorrectly positioned.	Realign the bottles.
Some items have dropped behind the appliance.	Remove these items.
The appliance is not installed on a level, dry, solid floor.	Realign the appliance.
Door seal is defective.	Replace the door seal.
Shelves are not inserted properly.	Insert the shelves properly.
Control panel is defective.	Contact the service.

16 Decommission

- If the appliance is not used for a longer period of time:
 1. Draw the plug out of the socket.
 2. Remove all food stored in the appliance.
 3. Dry the inside of the appliance with a cloth and leave the door open for a few days.
- While away on an average vacation/holiday (14–21 days):
 1. Do the same as described above, or
 2. Let the appliance operate.
 3. Remove all perishable food from the cooling compartment.
 4. Clean the cooling compartment.
 5. Freeze all food which is suitable to be frozen.
- If you want to move the appliance:
 1. Secure all removable parts and the contents of the appliance. Pack them separately if necessary.
 2. Transport the appliance in an upright position only. All other positions can cause damage to the compressor.
 3. Do not damage the feet of the appliance.

17 Electrical Circuit Diagram



18 Specifications

Model: BEWC-52

Capacity: 150L

Climate Type: SN.N

Protection Type: I

Voltage: 220–240V AC

Frequency: 50Hz

Rated Current: 220V/1.0A

Input Power: 90W

Temperature Control Range: 5–18°C

Net Weight: 47kg

Product Size (W×H×D): 59.5 x 84 x 56.8cm

BORDEAUX

Customer Support

www.asiapacbrands.com

Helpline New Zealand call toll free 0508 274 2722

Australia call +64 9 974 9206

Distributed by

Asia Pacific Brands Limited

PO Box 301145, Albany, Auckland, 0752

New Zealand